

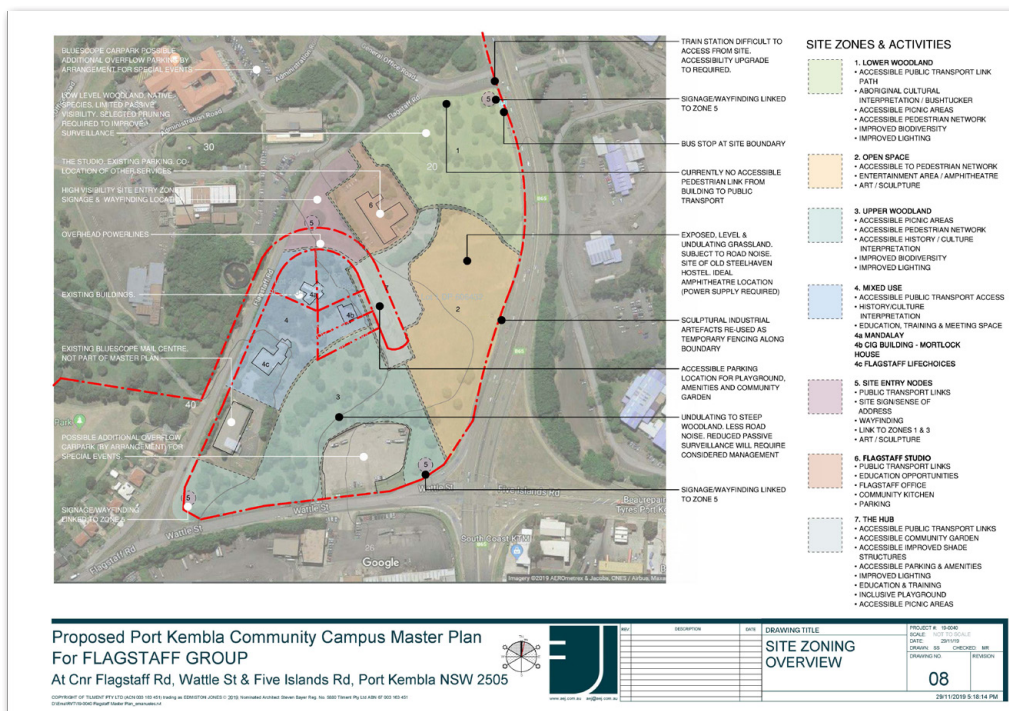


# PORT KEMBLA COMMUNITY CAMPUS

Thank you for your interest in the Community Campus at Flagstaff Road, Port Kembla. The project team read each of the wonderful ideas and creative responses to what might happen on this piece of land, owned by BlueScope Steel.

Although not all ideas can be included, many of them have been incorporated into the Master Plan which will be presented to the Bluescope Board early next year. As landowners, BlueScope approval is required to raise funds to implement the design, in stages, as money becomes available. A great many people have contributed to the vision for the Campus, so it's been surprising and delightful to see so many of the ideas come together around the common themes of environment, community sharing, education, and culture.

The key priorities for the site include an all-ages inclusive playground with parking and amenities, a community garden, picnic areas and cultural interpretation trails. The project team will also be lobbying to improve the accessibility of public transport to ensure everyone can easily visit the site.



This aerial photo of the site shows where the different activities could be located on the land.

The project team is finalising the Master Plan and will present the designs to the community at a meeting on Monday 17 February 2020, 4.30-6.00pm at 7-11 Flagstaff Road, Port Kembla.

